

Caption for Plate 1.

1-3 *Ammonia beccarii* (1, 2-ventral views of variants; 3-dorsal view), **4** *Buccella peruviana*, **5** *Cibicides* sp. (ventral view), **6** *Globocassidulina subglobosa*, **7** *Cornuspira involvens*, **8** *Discorbis* sp. (dorsal view), **9** *Elphidium excavatum*, **10** *Elphidium discoidale*, **11** *Elphidium galvestonensis*, **12** *Elphidium gunteri*, **13** *Elphidium poeyanum*, **14** *Poroeponides lateralis*, **15** *Hanzawaia boueana* (dorsal view), **16** *Hanzawaia boueana* (ventral view), **17** *Haynesina germanica*, **18** *Pararotalia cananeaensis* (dorsal view), **19** *Pararotalia cananeaensis* (ventral view), **20** *Nonionella atlantica*, **21** *Arenoparrella mexicana*, **22** *Haplophragmoides wilberti*, **23** *Haplophragmoides wilberti* (apertural view), **24** *Miliammina fusca*, **25** *Trochamminita salsa*.

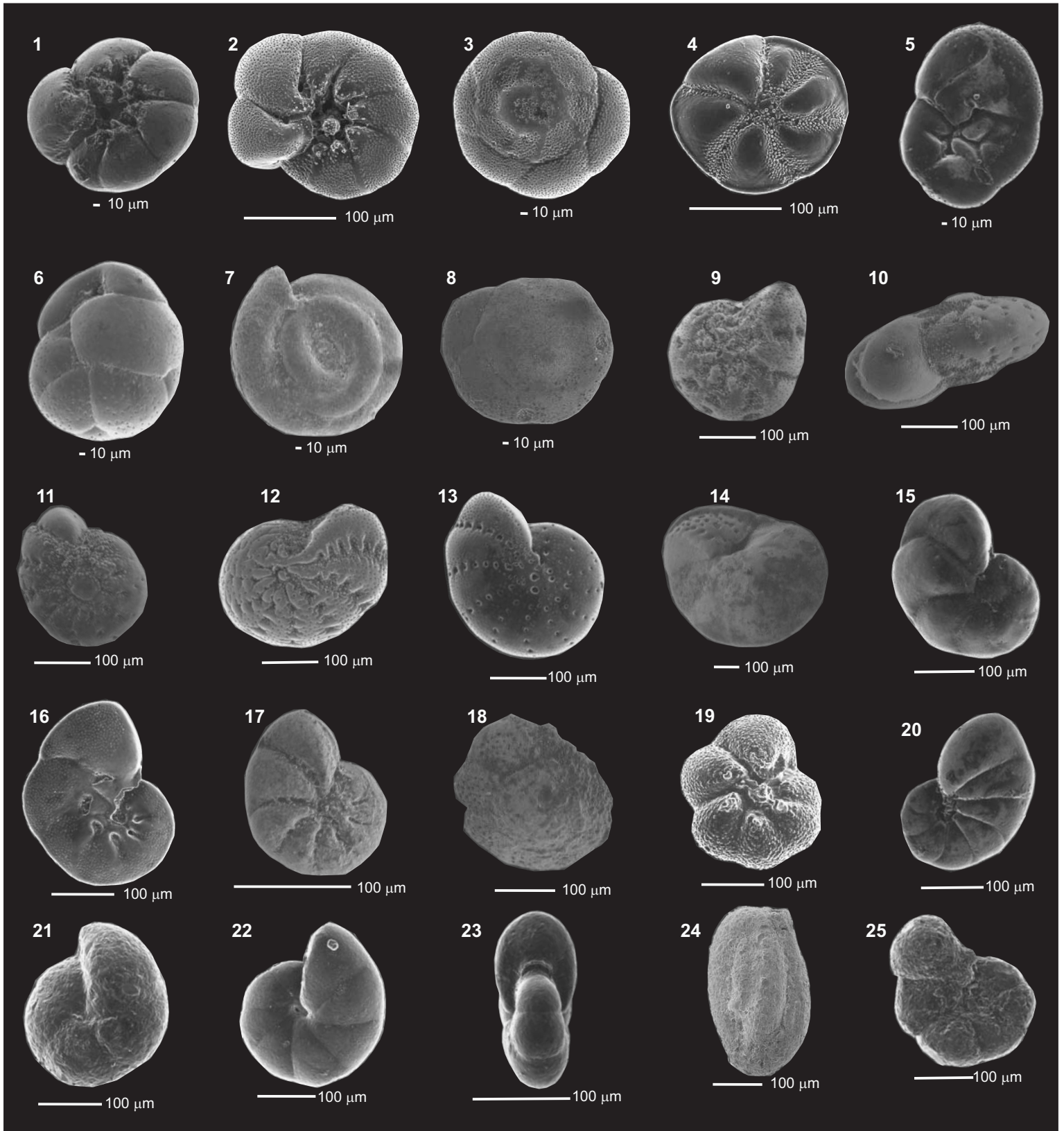


Plate 1.

Caption for Plate 2.

1 *Trochamminita salsa* (apertural view), **2** *Siphotrochammina lobata* (dorsal view), **3** *Siphotrochammina lobata* (ventral view), **4** *Tiphotrocha comprimata* (ventral view), **5** *Tiphotrocha comprimata* (dorsal view), **6** *Trochammina inflat*, **7** *Miliolinella subrotunda*, **8** *Pyrgo elongata*, **9** *Quinqueloculina* sp., **10** *Quinqueloculina costata* (apertural view), **11** *Quinqueloculina costata*, **12** *Quinqueloculina lamarckiana*, **13** *Quinqueloculina milletti*, **14** *Quinqueloculina patagonica*, **15** *Quinqueloculina patagonica* (apertural view), **16-17** *Bolivina* sp., **18** *Bolivina pulchella*, **19** *Bolivina striatula*, **20** *Bulimina elongata*, **21** *Bulimina marginata*, **22** *Bulimina marginata* (apertural view), **23** *Buliminella elegantissima*, **24** *Fursenkoina pontoni*. **25** *Fissurina laevigata*, **26** *Lagena striata*, **27** *Ammotium salsum*, **28** *Ammonoastuta salsa*, **29** *Ammobaculites* sp., **30** *Ammobaculites exiguus*, **31** *Gaudryina exilis*,. **32** *Reophax* sp.

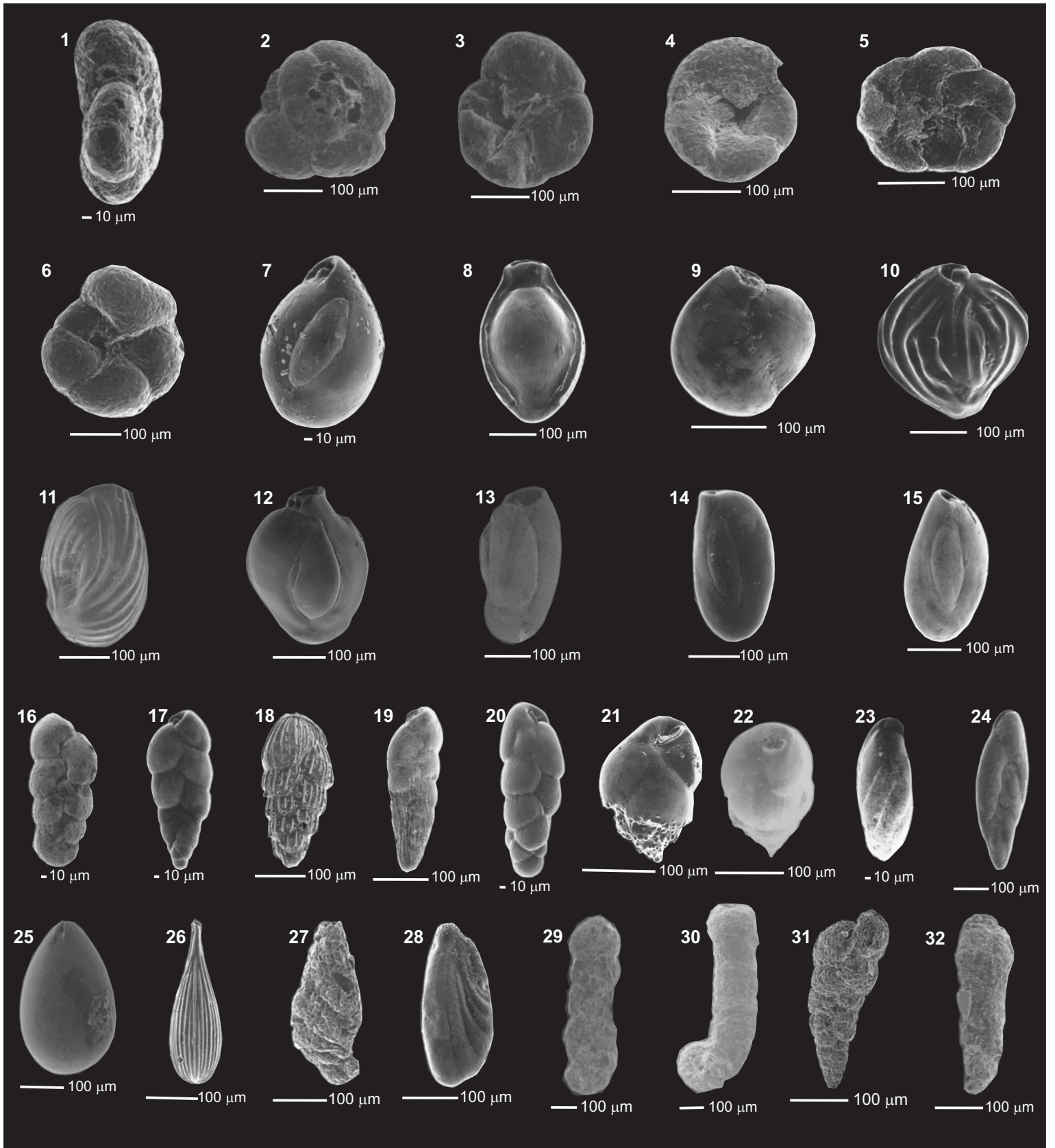


Plate 2.